

# OPTIC MOUNTS & RINGS

A close-up photograph of a metal optic mount assembly mounted on a rifle receiver. The mount is silver-colored and features a large, textured black knob on the right side. A horizontal metal rod is attached to the front of the mount. The background is dark and out of focus, showing parts of the rifle's receiver and a wooden stock.

## WHAT IT TAKES TO STAY ZEROED.

Staying zeroed. There is more to it than simply torquing down screws or throwing a lever to the side. Surface interfaces must adhere to strict tolerances, thread engagement must be precise to prevent cross-threading, mounts must be square, and locking lugs must be able to return to zero and manage the recoil. Leapers optic mounts & rings check all the boxes with our selection of adaptors, drilled and tapped receiver mounts, scope rings and integral mounts, and more.



## JUMP TO A SERIES

<b>SCOPE RINGS &amp; MOUNTS</b>	072
ACCUSYNC® QR Cantilever Mounts	072
ACCUSYNC® QR Cantilever Mounts w/ MOA Compensation <b>[NEW]</b>	073
ACCUSYNC® QR Scope Rings	075
ACCUSYNC® Cantilever Scope Rings & Mounts	077
ACCUSYNC® Anti-cant Levelers	077
UTG PRO® P.O.I.® Scope Rings	079
UTG® Scope Rings & Mounts	081
<b>DOVETAIL-TO-PICATINNY MOUNTS</b>	082
<b>DRILLED &amp; TAPPED RECEIVER MOUNTS</b>	083
<b>SHOTGUN SIDE SADDLE MOUNTS</b>	083
<b>AK &amp; M1A RECEIVER MOUNTS</b>	084
<b>PICATINNY RISERS</b>	085
<b>DEDICATED OPTIC MOUNTS</b>	086
Picatinny Mounts for DOCTER® / RMR®	
Picatinny Mounts for AIMPOINT® Micro	
Dovetail Mounts for RMR®	
Dovetail Mounts for DOCTER®	

(THIRD PARTY TRADEMARKS MAY BE USED IN THIS CATALOG FOR USER CONVENIENCE TO INDICATE THE FIT OR COMPATIBILITY OF THE APPLICABLE PRODUCT.)





# ACCURACY SYNCHRONIZED **ACCU-SYNC**<sup>®</sup> QUICK RELEASE **QR**

## ACCU-SYNC<sup>®</sup> QR CANTILEVER RINGS & MOUNTS

**UTG<sup>®</sup> ACCU-SYNC<sup>®</sup>** scope rings and cantilever mounts. Accuracy Synchronized. Featuring a locking quick release lever mount that is tool-free tension adjustable, shooters simply rotate an adjustment gear to increase or decrease the tension applied by the mount, which in turn, virtually accommodates both in and out-of-spec Picatinny Rails. Tested, validated, and proven to handle up to .338 LAPUA Magnum, adjustments made stay true via full contact Picatinny squared recoil stops and a keyed pin for a set-it-and-forget mode of operation. Stay lightweight, ready, and synchronized with a secure zero hold and return to zero with ACCU-SYNC<sup>®</sup> QR.

### FULL CONTACT RECOIL STOPS

Rated for .338 Lapua magnum, squared recoil stops prevent forward and rearward movement under harsh recoil



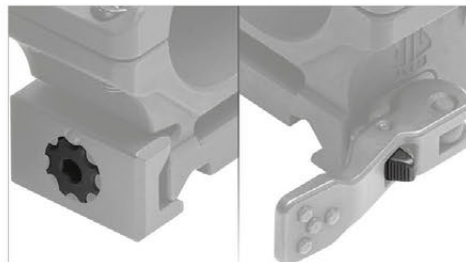
### LOCKING QUICK RELEASE LEVERS

QR throw levers lock in place preventing inadvertent release from environmental obstruction



### TOOL-FREE & WIDE-RANGE TENSION ADJUSTMENT

Set tension once and adjustment stays locked in, accommodates even most out-of-spec Picatinny rails and provides a secure repeatable zero



### "OUNCES EQUAL POUNDS, POUNDS EQUAL PAIN"

Lightweight skeletonized aluminum construction saves weight where it counts



# ACCU-SYNC® CANTILEVER MOUNTS

- » Precision CNC Machined from 6061-T6 Aluminum and Finished in a Matte Black Anodization
- » Quick Release (QR) Mount Features Tool-free Tension Adjustment, Locking QR Levers, and squared Recoil Stops for a Secure Zero Hold and Return to Zero
- » Squared Recoil Stops Prevent Forward and Rearward Movement under Recoil
- » Accommodates Even Most Out-of-spec Picatinny Rails
- » Locking Quick Release Throw Levers Prevent Inadvertent Release
- » Snag-free Radiused Edges and Corners and Melted Contours
- » Lightening Cut for Reduced Weight
- » Rated for .338 LAPUA Magnum



**ACCU-SYNC® QR CANTILEVER MOUNTS**

**MEDIUM PROFILE**

1 inch / AIR11834Q  
1 inch / AIR11850Q

**HIGH PROFILE**

1 inch / AIR12250Q  
30 mm / AIR32234Q  
30 mm / AIR32250Q

**X-HIGH PROFILE**

34 mm / AIR42270Q



**ACCU-SYNC® QR CANTILEVER MOUNTS W/ MOA COMPENSATION**

MOA Vertical Compensation Increases Access to Elevation Adjustment Range

**NEW**

**20 MOA**

34 mm / AIR420MOA  
30 mm / AIR320MOA

**30 MOA**

34 mm / AIR430MOA  
30 mm / AIR330MOA

**40 MOA**

34 mm / AIR440MOA  
30 mm / AIR340MOA

	AIR11834Q	AIR11850Q	AIR12250Q	AIR32234Q	AIR32250Q	AIR42270Q
Ring Type	QR Picatinny Cantilever Mount					
Ring Diameter	1"	1"	1"	30 mm	30 mm	34 mm
Profile	Medium	Medium	High	High	High	X-High
Max. Scope Outer Dia.	61 mm	61 mm	69 mm	73 mm	73 mm	78 mm
Center Height	31 mm	31 mm	35 mm	37 mm	37 mm	39 mm
Saddle Height	18 mm	18 mm	22 mm	22 mm	22 mm	22 mm
Ring Width	25 mm	25 mm	25 mm	25 mm	25 mm	25 mm
Ring Distance	44 mm	60 mm	60 mm	44 mm	60 mm	60 mm
Integral Base Length	100 mm	100 mm	100 mm	100 mm	100 mm	80 mm
Offset Distance	34 mm	50 mm	50 mm	34 mm	50 mm	70 mm

	AIR420MOA	AIR320MOA	AIR430MOA	AIR330MOA	AIR440MOA	AIR340MOA
Ring Type	QR Picatinny Cantilever Mount with MOA Compensation					
Ring Diameter	34 mm	30 mm	34 mm	30 mm	34 mm	30 mm
MOA	20	20	30	30	40	40
Tilted Degree	0.33°	0.33°	0.50°	0.50°	0.67°	0.67°
Max. Scope Outer Dia.	34 mm	30 mm	34 mm	30 mm	34 mm	30 mm
Center Height	39 mm	37 mm	39 mm	37 mm	39 mm	37 mm
Ring Width	25 mm	25 mm	25 mm	25 mm	25 mm	25 mm
Ring Distance	60 mm	60 mm	60 mm	60 mm	60 mm	60 mm
Integral Base Length	80 mm	80 mm	80 mm	80 mm	80 mm	80 mm
Offset Distance	70 mm	70 mm	70 mm	70 mm	70 mm	70 mm

ACCURACY SYNCHRONIZED QUICK RELEASE  
**ACCU-SYNC® QR**



# ACCU-SYNC® QR SCOPE RINGS



## LOW PROFILE

1 inch / AQR110  
30 mm / AQR310

## MEDIUM PROFILE

1 inch / AQR115  
30 mm / AQR315  
34 mm / AQR415

## PICATINNY

### HIGH PROFILE

1 inch / AQR120  
30 mm / AQR322  
34 mm / AQR420

### X-HIGH PROFILE

34 mm / AQR422

### 2X-HIGH PROFILE

34 mm / AQR432

## ACCU-SYNC® QR SCOPE RINGS

- » Tool-free and Wide-Range Tension Adjustment
- » Accommodates Even Most Out-of-spec Picatinny Rails
- » Locking Quick Release Throw Levers Prevent Inadvertent Release
- » Rated for .338 LAPUA Magnum
- » Squared Recoil Stops Prevent Forward and Rearward Movement under Recoil
- » Snag-free Radiused Edges and Corners and Melted Contours
- » Lightweight Skeletonized Matte Black Anodized Aluminum Construction

	AQR110	AQR115	AQR120	AQR310	AQR315	AQR322	AQR415	AQR420	AQR422	AQR432
Ring Type	Picatinny Rings (set of 2)									
Ring Diameter	1"	1"	1"	30 mm	30 mm	30 mm	34 mm	34 mm	34 mm	34 mm
Profile	Low	Medium	High	Low	Medium	High	Medium	High	X-High	2X-High
Max. Scope Outer Dia.	45.4 mm	55.4 mm	65.4 mm	50 mm	60 mm	74 mm	64 mm	74 mm	98 mm	98 mm
Center Height	22.7 mm	27.7 mm	32.7 mm	25 mm	30 mm	37 mm	32 mm	37 mm	39 mm	49 mm
Saddle Height	10 mm	15 mm	20 mm	10 mm	15 mm	22 mm	15 mm	20 mm	22 mm	32 mm
Ring Width	22 mm	22 mm	22 mm	22 mm	22 mm	22 mm	22 mm	22 mm	22 mm	22 mm

ACCURACY SYNCHRONIZED  
**ACCU-SYNC**®



# ACCU-SYNC® CANTILEVER RINGS & MOUNTS

- » Lightweight Skeletonized Matte Black Anodized Aluminum Construction
- » Accommodates Even Most Out-of-spec Picatinny Rails
- » Locking Quick Release Throw Levers Prevent Inadvertent Release
- » Squared Recoil Stops Prevent Forward and Rearward Movement under Recoil
- » Snag-free Radiused Edges and Corners and Melted Contours
- » Lightening Cuts Reduce Weight Without Compromising Durability



## PICATINNY CANTILEVER MOUNTS

### MEDIUM PROFILE

- 1 inch / AIR11834
- 1 inch / AIR11850
- 30 mm / AIR31834
- 30 mm / AIR31850

### HIGH PROFILE

- 1 inch / AIR12234
- 1 inch / AIR12250
- 30 mm / AIR32234
- 30 mm / AIR32250
- 34 mm / AIR42250



## PICATINNY CANTILEVER SCOPE RINGS

### HIGH PROFILE

- 1 inch / AIR122S
- 30 mm / AIR322S
- 34 mm / AIR422S



## ACCU-SYNC® ANTI-CANT LEVELERS

- » Magnetic Flip-to-Side Anti-Cant Bubble Leveler Easily Seen Through Peripherals without having to Break Target Focus and or Adjust Cheek Weld
- » Durable Matte Black Anodized 6061-T6 Aluminum Construction
- » Compatible with UTG® ACCU-SYNC® Cantilever Mounts and Rings that Feature a Mechanical Offset
- » US PAT. 1129372

### ANTI-CANT LEVELERS

- 1 inch / MT-RTR1
- 30 mm / MT-RTR3
- 34 mm / MT-RTR4

## ACCU-SYNC® ANTI-CANT LEVELERS & MRDS MOUNTS

- » Includes Cover Plate and DOCTER® and RMR® Footprint Compatible Optic Plates

- 1 inch with MRDS Mounts / MT-RTF1
- 30 mm with MRDS Mounts / MT-RTF3
- 34 mm with MRDS Mounts / MT-RTF4



	AIR11834	AIR11850	AIR12234	AIR12250	AIR31834	AIR31850	AIR32234	AIR32250	AIR42250	AIR122S	AIR322S	AIR422S
Ring Type	Picatinny Cantilever Mount									Cantilever Scope Rings		
Ring Diameter	1"	1"	1"	1"	30 mm	30 mm	30 mm	30 mm	34 mm	1"	30 mm	34 mm
Profile	Medium	Medium	High	High	Medium	Medium	High	High	High	High	High	High
Max. Scope Outer Dia.	61 mm	61 mm	69 mm	69 mm	65 mm	65 mm	73 mm	73 mm	77 mm	69 mm	73 mm	77 mm
Center Height	31 mm	31 mm	35 mm	35 mm	33 mm	33 mm	37 mm	37 mm	39 mm	35 mm	37 mm	39 mm
Saddle Height	18 mm	18 mm	22 mm	22 mm	18 mm	18 mm	22 mm	22 mm	22 mm	22 mm	22 mm	22 mm
Ring Width	25 mm	25 mm	25 mm	25 mm	25 mm	25 mm	25 mm	25 mm	25 mm	25 mm	25 mm	25 mm
Ring Distance	44 mm	60 mm	44 mm	60 mm	44 mm	60 mm	44 mm	60 mm	60 mm	N/A	N/A	N/A
Integral Base Length	100 mm	100 mm	100 mm	100 mm	100 mm	100 mm	100 mm	100 mm	100 mm	32 mm	32 mm	32 mm
Offset Distance	34 mm	50 mm	34 mm	50 mm	34 mm	50 mm	34 mm	50 mm	50 mm	37 mm	37 mm	37 mm



# PRECISION OPTICS INTERFACE®



BEFORE HANDLING RIFLE READ MANUAL FROM:

**BARRETT**

BARRETT FIREARMS MANUFACTURING, INC.  
MURFREESBORO, TN, U.S.A.

82A1  
AA002



# P.O.I.<sup>®</sup> | PRECISION OPTICS INTERFACE | SCOPE RINGS



## PICATINNY

**LOW PROFILE**  
1 inch / RWU012510  
30 mm / RWU013010

**MEDIUM PROFILE**  
1 inch / RWU012515  
30 mm / RWU013015  
34 mm / RWU013415

**HIGH PROFILE**  
1 inch / RWU012520  
30 mm / RWU013022  
34 mm / RWU013420

## DOVETAIL

**LOW PROFILE**  
1 inch / RDU013010

**MEDIUM PROFILE**  
1 inch / RDU012515  
30 mm / RDU013015

**HIGH PROFILE**  
1 inch / RDU012520  
30 mm / RDU013022



## P.O.I.<sup>®</sup> | PRECISION OPTICS INTERFACE | SCOPE RINGS

- » Progressively Machined Inner Diameter for a Precise and Seamless Ring-to-Scope Interface
- » Low Profile and Flush-fitting Locking Side Plate Features Dual Spring-loaded Guides Ensuring a Secure and Repeatable Zero
- » Integral Squared Recoil Stops Eliminate Forward and Rearward Movement Under Recoil
- » Rated up to .50 BMG
- » US PAT. D771218, EU PAT. 002761064-0001

	RWU012510	RWU012515	RWU012520	RWU013010	RWU013015	RWU013022	RWU013415	RWU013420	RDU012515	RDU012520	RDU013010	RDU013015	RDU013022
Ring Type	Picatinny Scope Rings (set of 2)								Dovetail Scope Rings (set of 2)				
Ring Diameter	1"	1"	1"	30 mm	30 mm	30 mm	34 mm	34 mm	1"	1"	30 mm	30 mm	30 mm
Profile	Low	Medium	High	Low	Medium	High	Medium	High	Medium	High	Low	Medium	High
Max. Scope Outer Dia.	45 mm	55 mm	65 mm	49 mm	59 mm	73 mm	63 mm	73 mm	55 mm	65 mm	49 mm	59 mm	73 mm
Center Height	23 mm	28 mm	33 mm	25 mm	30 mm	37 mm	32 mm	37 mm	28 mm	33 mm	25 mm	30 mm	37 mm
Saddle Height	10 mm	15 mm	20 mm	10 mm	15 mm	22 mm	15 mm	20 mm	15 mm	20 mm	10 mm	15 mm	22 mm
Ring Width	22 mm	22 mm	22 mm	22 mm	22 mm	22 mm	22 mm	22 mm	22 mm	22 mm	22 mm	22 mm	22 mm



★ COMETA MADE IN SPAIN



# UTG® SCOPE RINGS & MOUNTS



### PICATINNY

#### LOW PROFILE

1 inch / RG2W1104  
30 mm / RG2W3104



#### MEDIUM PROFILE

1 inch / RG2W1154  
30 mm / RG2W3154



#### HIGH PROFILE

1 inch / RG2W1204  
30 mm / RG2W3224

#### LOW PROFILE

1 inch / RGWM-25L2  
30 mm / RGWM-30L4

### PICATINNY

#### MEDIUM PROFILE

1 inch / RGWM-25M4  
30 mm / RGWM-30M4

#### HIGH PROFILE

1 inch / RGWM-25H4  
30 mm / RGWM-30H4



### DOVETAIL

#### MEDIUM PROFILE

1 inch / RGPM-25M4  
30 mm / RGPM-30M4  
1 inch / RGPM2PA-25M4  
30 mm / RGPM2PA-30M4

#### HIGH PROFILE

1 inch / RGPM-25H4  
30 mm / RGPM-30H4  
1 inch / RGPM2PA-25H4  
30 mm / RGPM2PA-30H4  
1 inch / RGPMOFS38-25H4

	RG2W1104	RG2W1154	RG2W1204	RG2W3104	RG2W3154	RG2W3224
Ring Type	QD Twist Lock Picatinny Scope Rings (set of 2)					
Ring Diameter	1"	1"	1"	30 mm	30 mm	30 mm
Profile	Low	Medium	High	Low	Medium	High
Max. Scope Outer Dia.	45 mm	55 mm	65 mm	49 mm	59 mm	73 mm
Center Height	23 mm	28 mm	33 mm	25 mm	30 mm	37 mm
Saddle Height	10 mm	15 mm	20 mm	10 mm	15 mm	22 mm
Ring Width	18 mm	22 mm	22 mm	22 mm	22 mm	22 mm

	RGWM-25L2	RGWM-25M4	RGWM-25H4	RGWM-30L4	RGWM-30M4	RGWM-30H4
Ring Type	Picatinny Scope Rings (set of 2)					
Ring Diameter	1"	1"	1"	30 mm	30 mm	30 mm
Profile	Low	Medium	High	Low	Medium	High
Max. Scope Outer Dia.	45 mm	53 mm	61 mm	47 mm	57 mm	73 mm
Center Height	23 mm	27 mm	31 mm	24 mm	29 mm	37 mm
Saddle Height	10 mm	14 mm	18 mm	9 mm	14 mm	22 mm
Ring Width	16 mm	21 mm	21 mm	21 mm	21 mm	21 mm

	RGPM-25M4	RGPM-25H4	RGPM-30M4	RGPM-30H4	RGPM2PA-25M4	RGPM2PA-25H4	RGPM2PA-30M4	RGPM2PA-30H4	RGPMOFS38-25H4
Ring Type	Dovetail Scope Rings (set of 2)				Dovetail Scope Ring Mounts				
Ring Diameter	1"	1"	30 mm	30 mm	1"	1"	30 mm	30 mm	1"
Profile	Medium	High	Medium	High	Medium	High	Medium	High	High
Max. Scope Outer Dia.	53 mm	67 mm	57 mm	71 mm	53 mm	67 mm	57 mm	71 mm	67 mm
Center Height	27 mm	34 mm	29 mm	36 mm	27 mm	34 mm	29 mm	36 mm	34 mm
Saddle Height	14 mm	21 mm	14 mm	21 mm	14 mm	21 mm	14 mm	21 mm	21 mm
Ring Width	21 mm	21 mm	21 mm	21 mm	21 mm	21 mm	21 mm	21 mm	21 mm
Ring Distance	N/A	N/A	N/A	N/A	58 mm	58 mm	58 mm	58 mm	39 mm
Integral Base Length	N/A	N/A	N/A	N/A	100 mm	100 mm	100 mm	100 mm	62 mm
Offset Distance	N/A	N/A	N/A	N/A	N/A	N/A	N/A	N/A	38 mm



## DOVETAIL TO PICATINNY MOUNTS



### DOVETAIL TO PICATINNY ADAPTOR MOUNT

- » Precision Machined from Aircraft Aluminum with a Matte Black Finish
- » 3.94" Scalloped 9 Slot Picatinny Rail with 0.59" Saddle Height
- » Compatible with Flat Receivers Equipped with 9mm-11mm Dovetail Rails
- » US PAT. D837330

/ MNT-PMTOWL-A



### UNIVERSAL DOVETAIL TO PICATINNY ADAPTOR

- » Precision Machined from Aircraft Aluminum with a Matte Black Finish
- » Compatible with 9mm - 11mm Flat or Rounded Dovetail Rails
- » US PAT. 10352656, EU PAT. EP3196588

/ MNT-DTW145



### DOVETAIL-TO-PICATINNY SNAP-IN RAIL ADAPTOR

- » Converts Picatinny Mounts and Accessories to Dovetail
- » Spring-loaded Self-adjusting Width with Removable Stop Pin for Added Retention
- » Reliable Aluminum and Steel Construction
- » US PAT. 8752325, EU PAT. EP3196588

/ MNT-DT2PW01 (Set Of 2)

## DRILLED & TAPPED RECEIVER MOUNTS



### UTG PRO®

#### OPTIC MOUNT FOR REMINGTON® 870™

- » Precision Machined from Aircraft Aluminum with a Matte Black Hard Coat Anodize
- » 6.1" Length with 14 Picatinny Slots
- » Low Profile with See Thru Design for Use of Front Bead Sight
- » Compatible with REMINGTON® 870™/1100™ with Drilled and Tapped Receiver

/ MTU028SG



#### OPTIC MOUNT FOR REMINGTON® 700®

- » Solid Steel Construction
- » Clearance Cut for Reliable Case Ejection

For REMINGTON® 700® Long Action Rifles / MNT-RM700

For REMINGTON® 700® Short Action Rifles / MNT-RM700S



### UTG PRO®

#### OPTIC MOUNT FOR MOSSBERG® 500®

- » Precision Machined from Aircraft Aluminum with a Matte Black Hard Coat Anodize
- » 5.5" Length with 13 Picatinny Slots
- » Low Profile See Thru Design Allows Use of Front Sight Bead
- » Compatible with MOSSBERG® Model 500® with Drilled and Tapped Receiver

/ MTU029SG



### UTG PRO®

#### OPTIC MOUNT FOR RUGER® 10/22®

- » Precision Machined from Aircraft Aluminum with a Matte Black Hard Coat Anodize
- » 4.67" Length with 11 Picatinny Slots
- » Low Profile Design with U-cut for Weight Reduction
- » Compatible with RUGER® 10/22® with Drilled and Tapped Receiver

/ MTU030T22

## SHOTGUN SIDE SADDLE MOUNTS



#### OPTIC MOUNT FOR MOSSBERG® 500® / 590® / 590M®

- » Durable 6061-T6 Aluminum Construction Finished in a Matte Black Anodization
- » Removable 4-Capacity Shot Shell Carrier Included
- » MT-MB590: Compatible with 12 Gauge MOSSBERG® 500®/590® Shotguns
- » MT-MB590M: Compatible with 12 Gauge MOSSBERG® 590M® Mag-Fed Shotguns

For MOSSBERG® 500® / 590® / MT-MB590  
For MOSSBERG® 590M® / MT-MB590M



#### OPTIC MOUNT FOR REMINGTON® 870™

- » Durable 6061-T6 Aluminum Construction Finished in a Matte Black Anodization
- » Removable 4-Capacity Shot Shell Carrier Included
- » Compatible with 12 Gauge REMINGTON® 870™ and 870 DM Shotguns with up to a 3.5" Chambering

/ MT-RM870



# AK & M1A RECEIVER MOUNTS



### ACCU-SYNC® QR AK SIDE MOUNT

- » Matte Black Anodized Steel-reinforced 6061-T6 Aluminum Construction
- » Tool-free, Tension-adjustable Quick Release (QR) Lever Mount Compatible with Most Standard Receiver Side Rails
- » Universal, 16-slot Picatinny Top Rail, Centering with Receiver May Vary Depending on Rifle Make and Model and Manufacturer Tolerances
- » Overall Lightweight Design Features 2 Side M-LOK® Slots for Attaching Accessories
- » US PAT. D949276, US PAT. D949277

/ MT-UAK01



### UTG PRO®

#### AK QD SIDE MOUNT

- » Proudly Designed and Made in USA
- » Matte Black Anodized 6061-T6 Aluminum Construction
- » Lightweight Design with Deep U-Cut Channel for Accessing Iron Sights
- » 16 Slot Picatinny Top Rail with Detachable 6 Slot Side Rail
- » Adjustable Quick Detach Lever Mount

/ MTU016



### AK QD SIDE MOUNT FOR ZASTAVA M70 N-PAP

- » Matte Black Anodized 6061-T6 Aluminum Construction
- » Adjustable Quick-detach Lever Mount
- » Scalloped 15 Slot Picatinny Rail Features a Deep U-cut Channel for Accessing Iron Sights
- » Overall Lightweight Design Features 2 Side M-LOK® Slots for Attaching Accessories
- » US PAT. D949276, US PAT. D949277

/ MT-ZAK01



### AK STEEL SIDE PLATE

- » Durable Steel Construction with a Matte Black Finish
- » Fits Both Milled and Stamped AK Receivers and Accepts a Wide Variety of Side Optic Mounts
- » Permanent Modification Required

/ TL-M47SR



### OPTIC MOUNT FOR M14/M1A

- » Full-length 15 Slot Scalloped Picatinny Top Rail
- » Iron Sight Accessible Channel
- » Secure Zero Retention through 4 Points of Contact with Receiver
- » Matte Black Anodized Aluminum Construction
- » No Permanent Modification Required

/ MNT-914V2

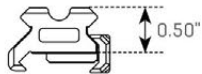
# PICATINNY RISERS



## PICATINNY RISER MOUNTS

**0.5 INCH**

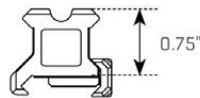
3-slot / MT-RSX5S  
13-slot / MT-RSX5L



US PAT. D784482

**0.75 INCH**

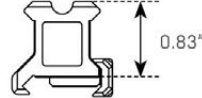
3-slot / MT-RSX7S  
13-slot / MT-RSX7L



US PAT. D784483

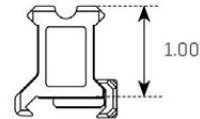
**0.83 INCH**

3-slot / MT-RSX8S  
13-slot / MT-RSX8L



**1 INCH**

3-slot / MT-RSX1S  
13-slot / MT-RSX1L



US PAT. D784481

## 20 MOA ELEVATED PICATINNY MOUNT

13-slot / MT-RSX20MOA



## SUPER SLIM PICATINNY RISER MOUNTS

- » Matte Black Anodized 6061-T6 Aluminum Construction
- » Lightweight and Low Profile with Dehorned Corners and Melted Contours
- » Laser Engraved T-marked MIL-STD-1913 Picatinny Rail
- » Squared Recoil Stops for a Secure and Repeatable Zero Hold
- » Lightening Cuts Reduce Overall Weight and Bulk (Medium and High Profile Only)

	MT-RSX5S	MT-RSX7S	MT-RSX8S	MT-RSX1S	MT-RSX5L	MT-RSX7L	MT-RSX8L	MT-RSX1L	MT-RSX20MOA
Length	1.6"	1.6"	1.6"	1.6"	5.5"	5.5"	5.5"	5.5"	5.5"
Saddle Height	0.50"	0.75"	0.83"	1.00"	0.50"	0.75"	0.83"	1.00"	0.52"/0.55"
Picatinny Slots	3	3	3	3	13	13	13	13	13
Weight	0.9 oz	0.9 oz	1.0 oz	1.0 oz	2.7 oz	2.7 oz	2.8 oz	2.8 oz	2.7 oz



Utilizes Locking Torx Screws and Squared Recoil Stops for a Secure Zero Hold



Rail Slots Index in Line with Receiver Slots



Scalloped Picatinny Slots for Snag Free Accessory Mounting





# DEDICATED PICATINNY OPTIC MOUNTS

## FOR DOCTER® / RMR®



**45 DEGREE**

DOCTER® Footprint / RDM-2045  
RMR® Footprint / MT-RMR45



**LOW PROFILE**

RMR® Footprint / MT-RMRXS



**ABSOLUTE CO-WITNESS**

DOCTER® Footprint / RDM-20AC  
RMR® Footprint / MT-RMRAC



**LOWER 1/3 CO-WITNESS**

RMR® Footprint / MT-RMR13C



## FOR AIMPOINT® MICRO

**LOWER 1/3 & ABSOLUTE CO-WITNESS**

Lower 1/3 Co-Witness / MT-T113C  
Absolute Co-Witness / MT-T1AC

	RDM-2045	RDM-20AC	MT-RMR45	MT-RMR13C	MT-RMRKIT		MT-T1AC	MT-T113C
					MT-RMRAC	MT-RMRXS		
Footprint	For DOCTER®	For DOCTER®	For TRIJICON RMR®	For TRIJICON RMR®	For TRIJICON RMR®	For TRIJICON RMR®	For AIMPOINT® Micro	For AIMPOINT® Micro
Length / Width	1.8" / 2.5"	1.8" / 1.1"	1.8" / 2.5"	1.8" / 1.1"	1.8" / 1.1"	1.8" / 1.1"	1.9" / 1.2"	1.9" / 1.2"
Saddle Height	N/A	0.78"	N/A	0.95"	0.87"	0.40"	0.78"	1.04"
Weight	1.5 oz	1.5 oz	1.4 oz	1.6 oz	1.5 oz	1.4 oz	1.2 oz	1.3 oz



PERSON.COM | SINCE 1992

# DEDICATED DOVETAIL OPTIC MOUNTS

## FOR RMR®



### REAR SIGHT DOVETAIL

For GLOCK® Dovetail / MT-RMRGL

## FOR DOCTER®



### REAR SIGHT DOVETAIL

For GLOCK® Dovetail / RDM-20GL  
For Sig P-Series Dovetail / RDM-20SIG  
For S&W M&P® Dovetail / RDM-20SW



### LOW PROFILE

0.33" Saddle Height / RDM-20XSD

## OP3 MICRO MRDS

\* Refer to P. 066 - P. 067 for More Info



### OP3 MICRO SL

Side Loading Battery / Manual Brightness

DOCTER® Footprint / Red 4 MOA / OP-RDM20CT

### OP3 MICRO SLS

Side Loading Battery / Manual & Auto Sensing Brightness

DOCTER® Footprint / Red 4 MOA / OP-RDM20CTS  
RMR® Footprint / Red 4 MOA / OP-RMR20CTS

### OP3 MICRO

Manual Brightness

DOCTER® Footprint / Red 4 MOA / OP-RDM20R  
DOCTER® Footprint / Green 4 MOA / OP-RDM20G  
RMR® Footprint / Red 4 MOA / OP-RMR20R

	MT-RMRGL	RDM-20GL	RDM-20SIG	RDM-20SW	RDM-20XSD
Mount Type	For GLOCK® Dovetail	For GLOCK® Dovetail	For SIG P-Series Dovetail	For S&W M&P® Dovetail	9mm - 11mm Flat or Round Dovetail
Footprint	For TRIJICON RMR®	For DOCTER®	For DOCTER®	For DOCTER®	For DOCTER®
Length / Width	1.8" / 1.1"	1.8" / 1.1"	1.8" / 1.1"	1.8" / 1.1"	1.8" / 1.1"
Saddle Height	0.16"	0.15"	0.16"	0.16"	0.3"
Weight	0.4 oz	0.5 oz	0.5 oz	0.5 oz	21.3 oz